

# Preset Torque Screwdriver

The perfect choice for multiple production uses, this driver is rugged and precise. The Preset series consists of four models and covers a torque range of 4 to 450 Ncm or 6 in. ozs. to 40 in. lbs.

All models in the PS range are ESD safe. 



The end cap removes for access to the 1/8" Hex adjustment screw (Hex key included with each driver). Then use a certified torque tester to verify the exact torque value after adjustment. Replace the end cap and it's ready to go!

## The Preset Torque Screwdriver

Outstanding for high-volume use in assembly where precision and repeatability is paramount. Torque values are easily set on this durable driver.

<i>Torque ranges*</i>	<i>Prod code</i>
4-22 Ncm, 6 -32 in. ozs.	PS 501-1
7-70 Ncm, 10-100 in. ozs.	PS 501-2
15-170 Ncm, 1.5-15 in. lbs.	PS 501-3
45-450 Ncm, 4-40 in. lbs.	PS 501-4

*\*Accuracy +/- 6%.*



PS501-1

PS501-2

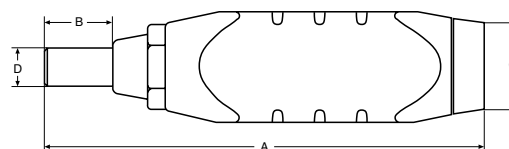
PS501-3

PS501-4

Distributed by: All-Spec Industries  
Wilmington, NC

Ph: 800-537-0351  
Fx: 800-379-9903

sales@all-spec.com  
www.all-spec.com



## Assortment

Product code	EAN-code +731415	Torque capacity Ncm	in. ozs./in. lbs	A mm	in.	B mm	in.	C mm	in.	D mm	in.	in.	g	oz
PS501-1	0112425	4-22	6-32 in. ozs.	115	4.53	18.2	0.72	28	1.10	9.6	0.38	1/4	147	1
PS501-2	0112432	7-70	10-100 in. ozs.	141	5.55	18.2	0.72	28	1.10	9.6	0.38	1/4	187	1
PS501-3	0112449	15-170	1.5-15 in. lbs.	141	5.55	18.2	0.72	28	1.10	9.6	0.38	1/4	198	1
PS501-4	0112456	45-450	4-40 in. lbs.	154	6.06	18.2	0.72	32	1.26	9.6	0.38	1/4	270	1

# ESD APPROVAL

## Validity of the approval

Until 2008-01-28.

## Holder of the approval

Bahco Tools AB, Enköping, Sweden

## Category of product

Screwdrivers

## Products

Manufacturer/ supplier	Type designations	Description
Lindstrom	PS501-1 PS501-2 PS501-3 PS501-4	Dynamometric screwdrivers

Fulfil requirements according to IEC 61340-5-1.

## Documentation for approval

Test report F5 00213.

The ESD-approval does not include any requirements on electrical safety properties. If work will be performed close to live voltages, requirements according to The Swedish National Electric Safety Board shall be obeyed. For other countries corresponding regulations are applicable.

## Conditions for approval

General conditions, according to SP-Method 2472, for approval and registration of approved products with regard to ESD-protection qualities.

## SP Swedish National Testing and Research Institute Electronics – ESD Protection

  
Anders Nilsson  
Technical Manager

  
Sven Byheden  
Technical Officer

## SP Swedish National Testing and Research Institute

Postal address  
SP  
Box 857  
SE-501 15 Borås  
SWEDEN

Office location  
Västeråsen  
Brinellgatan 4  
Borås

Phone / Fax / E-mail  
+46 33 16 50 00  
+46 33 13 55 02  
info@sp.se

This document may not be reproduced other than in full,  
except with the prior written approval of SP.

## CERTIFICATION

This torque screwdriver as calibrated at the factory, is certified to meet the accuracy in specifications: ASME B107.14M-1994 and ISO 6789.

Additionally all torque screwdrivers are calibrated on a torque standard traceable to the National Institute of Standards Technology (N.I.S.T.).

## CONVERSION TABLE

To convert From	To	Multiply by
lb.in.	oz.in.	16
lb.in.	lb.ft.	.08333
lb.in.	kg.cm.	1.1519
lb.in.	kg.m.	.011519
lb.in.	N.m.	.113
lb.in.	dN.m.	1.13
lb.ft.	kg.m.	.1382
lb.ft.	N.m.	1.356
N.m.	dN.m.	10
N.m.	kg.cm.	10.2
N.m.	kg.m.	.102
oz.in.	lb.in.	.0625
lb.ft.	lb.in.	12
kg.cm.	lb.in.	.8681
kg.m.	lb.in.	86.81
N.m.	lb.in.	8.85
dN.m.	lb.in.	.885
kg.m.	lb.ft.	7.236
N.m.	lb.ft.	.7376
dN.m.	N.m.	.10
kg.cm.	N.m.	.09807
kg.m.	N.m.	9.807

## FOR YOUR PERMANENT FILE

Wrench  
Model  
Number \_\_\_\_\_

Serial  
Number \_\_\_\_\_

➤ **LINDSTROM**

### EUROPE AND NORDIC CUSTOMER SERVICE

Lindstrom Precision Tools  
SE-745 82 ENKOPING  
SWEDEN  
TEL: + 46 171 227 00  
FAX: + 46 171 228 44

### U.S. CUSTOMER SERVICE

Lindstrom U.S.  
1440 W. Taft Avenue  
ORANGE, CA 92865  
U.S.A.  
TEL: 714 921 9950  
FAX: 714 921 9595

FORM 20-270A-LIND  
12/00 REV. N/C

➤ **LINDSTROM**

## OPERATION MANUAL

### PRESET TORQUE SCREWDRIVER



Lindstrom Precision Tools  
The choice of professionals  
throughout the world for accuracy,  
durability and reliability

## SAFETY MESSAGES



### WARNING



Read operation manual completely before using torque instrument and store for future reference.



Wear safety goggles-both user and bystanders



- An out of calibration torque screwdriver can cause part or tool breakage
- Periodic re-calibration is necessary to maintain accuracy
- Do not exceed rated torque specifications as overtorquing can cause screwdriver or part failure

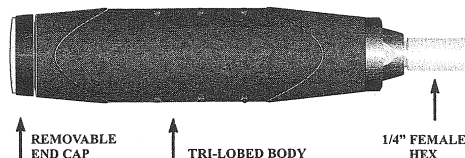


- Broken or slipping tools can cause injury

## MAINTENANCE / SERVICE

1. The torque screwdriver's internal mechanism is permanently lubricated during assembly. **Do not attempt to lubricate the internal mechanism.**
2. Clean torque screwdriver by wiping.  
**Do not immerse.**

## ADJUSTMENTS OF TORQUE SETTINGS



To set screwdriver to desired torque:

1. Determine proper torque to be applied to the fastener.
2. Use a certified torque tester that is accurate within a range suited to screwdriver torque range.
3. Remove end cap at the base of screwdriver. See (FIGURE I)

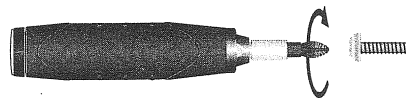


FIGURE I

4. Place screwdriver on tester and cycle several times observing the torque setting displayed on the tester.
5. With a 1/8" hex key adjust the set screw at the base of the preset torque screwdriver. Turn clockwise (cw) to increase the amount of torque and counter-clockwise (ccw) to decrease the amount of torque.

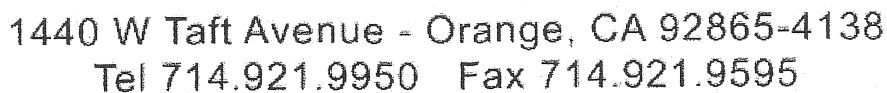
6. Adjust until the desired torque setting is reached. Turn the screwdriver several more times on the tester and fine tune the setting to as repeatable a number as possible. Replace end cap.
7. Install the proper bit into the hex receiver and the screwdriver is ready to use.
8. To torque fastener, keep hand centered on the handle. Turn handle until a click/impulse is heard or felt. Stop turning, the screwdriver will automatically reset for the next operation.

### USE PERPENDICULAR IN LINE WITH FASTENER



***SIDE LOADING NOTE:***  
**WHEN APPLYING TORQUE THE SCREWDRIVER MUST BE KEPT PERPENDICULAR TO THE PLANE OF USE (EITHER HORIZONTAL OR VERTICAL). INACCURACIES IN TORQUE READINGS MAY OCCUR FROM APPLYING A "SIDE LOAD".**





## ALL-SPEC INDUSTRIES

**\*\*\* Example of Calibration Certificate Included with Tool \*\*\***

Model no.:	PS501-4	Serial Number:	XXXXXXXXXXXX
Type:	PRESET	Manufacturer:	LINDSTROM
Max. Range:	40	Calibration equipment:	CDI SURETEST
Primary Scale:	IN LB		0.25%
Full Range:	4-40	Temp. / Humidity:	N/A

Clockwise Tolerance: +/- 6% Readings: IN LB

Set Torque: IN LB

At: 18.00

18.03	0.1%
-------	------

17.96	-0.2%
-------	-------

17.94	-0.3%
-------	-------

**Result:** Measured values are within tolerance according to: ASME B107.14M-1994 for Type I, Class B, Style 1,2 & 3

Today's Date: 2/19/2010

Operator:

Checked:

Calibration is performed by comparison with reference standards which have been calibrated by a recognized NIST-laboratory and are therefore traceable to the National Institute of Standards and Technology. The issuer of this certificate bears sole responsibility for calibration and documentation thereof. Duplication of this certificate or parts hereof is prohibited. The manufacturer recommends that the calibration be checked at the earlier of 6 months or 5,000 cycles, after the date the torque wrench is put in service.

DATE WRENCH PUT IN SERVICE: \_\_\_\_\_

**Enter Torque Values using Date and Time Stamp mode.**

## Start Here

[illegible]